

Myopia control

- DRL (Double Reservoir Lens)
- Click&Fit Software



Innovative ORTHO K



DRL M, DRL T and DRL H NIGHT LENSES / ORTHO K

PRINCIPLE

Ortho K allows a natural crisp vision all day long without wearing contact lenses. Cornea is reshaped thanks to specific gas permeable contact lenses that are worn during the night.

The benefits of correction through corneal reshaping

Children and young persons	Adults
<ul style="list-style-type: none"> • Myopia control • Wearing contact lenses in a controlled, safe environment (at home) • The ability to practise sport 	<ul style="list-style-type: none"> • Freedom: natural vision • Improved comfort over daily wear • No eye dryness • Improved depth of field

Pay attention to :

- **To comply with insertion, removal, cleaning and care protocols**
- Adaptation time (10 days for a short-sighted person, 15 days to 3 weeks for someone with an astigmatism and a person with hyperopia).
- The possibility of halos in the vision of adults at the start of treatment.
- The possibility of residual astigmatism.

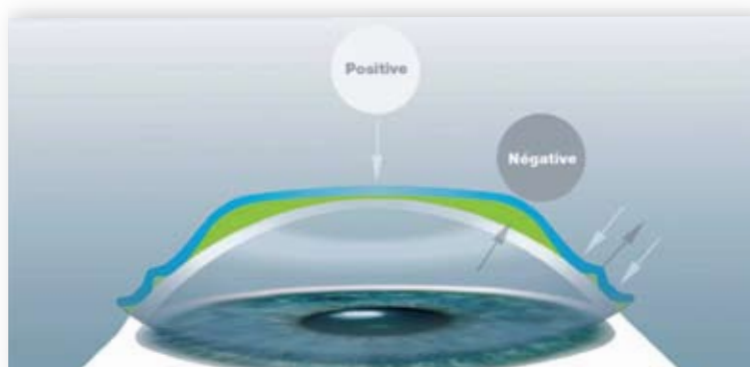
	INDICATIONS	CONTREINDICATIONS
CHILDREN and YOUNG PERSONS	<ul style="list-style-type: none"> - Young people with myopia - Sports 	<ul style="list-style-type: none"> - Poor hygiene - A lack of commitment on the part of one of the parties involved (one of the parents or the child) - Irregular sleep patterns - An internal astigmatism - Ocular pathology, a systemic disease
ADULTS	<ul style="list-style-type: none"> - Sports activities - Intensive screen use - Soft contact lens patients - Dry eyes (with the exception of those with dry eye syndrome) - A contreindication for refractive surgery - Occupation requiring a good level of visual acuity without equipment 	<ul style="list-style-type: none"> - Pupil diameter > 4 mm - Ocular pathology, systemic disease - Hyperopes with astigmatism - Irregular sleep patterns - Poor hygiene - An internal astigmatism

10 YEARS OF EXPERTISE

Innovation and education

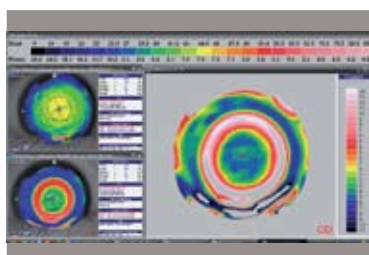
DRL (Double Reservoir Lens)

- DRL M** Myopia up to -7.00 D
- DRL T** Astigmatism up to -4.00 D
- DRL H** Hyperopia up to +4.00 D

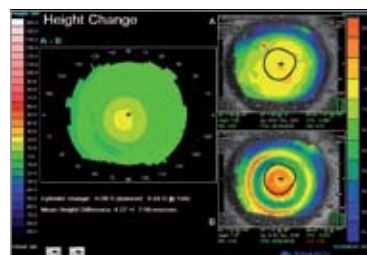


Training is required for first fit: technicalsupport@precilens.com

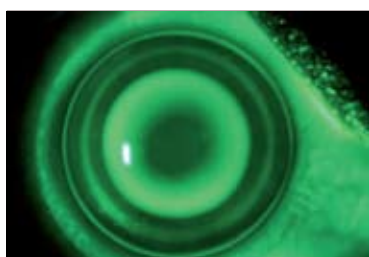
Range	DRL M : Myopia up to -7.00 D DRL T : Astigmatism up to -4.00 D DRL H : Hyperopia up to +4.00 D
Material	Boston XO with UV filter , DK 100 : Optimum Extra Colour right : Purple/ left : blue
Geometrie	Front surface : spheric for DRL M Aspheric for DRL H Back surface: 5 curves (2 reverse)
BZOD	Variable 6,60 - 5,60
\varnothing_T	10.00 to 11.40 by 0.20
r_0	custom
Power	custom
Kind of wear	Night wear
Renewal	1 year
Conditioning	Individual lens cup



Topo DRLM



Topo DRLH



Fluo DRLM



Fluo DRLH

FITTING GUIDE

1st appointment to specify the trial lenses

1. Topography :

- Instil one or two drops of comfort solution in order to ensure a regular meniscus of tears
- Ask the patient to blink 2-3 times and then open the eyes wide to obtain maximum measurement surface
- Check the reproducibility of the topographies by taking 4 images for each eye and comparing with the keratometry provided by an autorefractor

2. Precise subjective refraction subjective

3. Measurement of the cornea diameter

4. Validation of indications:

No contreindication | Refraction within manufacturing limits | Pupil diameter < 4mm | Motivation of the wearer

At each follow-up appointment *after the 1st night - at 10 nights - 1 month - 3 months - 6 months - 1 year*

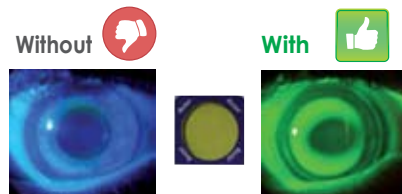
The wearer must attend with their contact lenses in the lens cup

1. The wearer must attend with their contact lenses in the lens cup
2. Additional refraction
3. Topography
4. Fluo images : Instill the fluorescein inside the lens before inserting

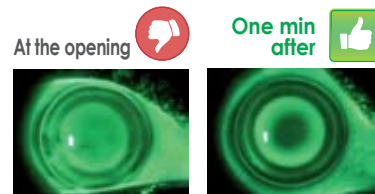
Three minutes eyes closed



Yellow filter



One minute eyes opened



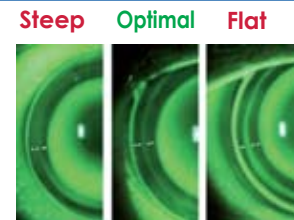
Centred lens



Validation central fluorescein pattern



Validation peripheral fluorescein pattern



Validation of handling and observance:

- Inserting: lens filled with comfort solution without preservative, mirror flat on a table : <http://www.contactlensatnight.com/>
- Removal: instil 2 drops of comfort solution in the morning upon waking up, then wait 15 minutes before taking out the lenses : <http://www.contactlensatnight.com/>
- Care: massage + protective oxidant + deproteinization every week