



ORTHO-K NEW LENS GENERATION

«Better than control myopia, prevent it»



FROM MYOPIA CONTROL TO PREVENTION: T

MYOPIA: A GLOBAL THREAT

By 2050, myopia will affect 5 billion people worldwide compared to 2.5 billion today

- With 10% of the population highly short-sighted (over -6.00), compared to 5% today (Source: Brien Holden Vision Institute)



	Cataracts	Glaucoma	Retinal detachment	Macular degeneration
-1.00 to -3.00 D	2 x	4 x	3 x	2 x
-3.00 to -6.00 D	3 x	4 x	9 x	10 x
> -6.00 D	5 x	14 x	22 x	41 x

Pathological risks related to myopia

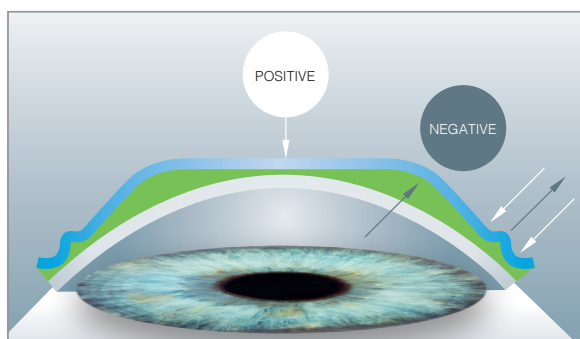
Prevalence of myopia in young people around the world

The progression of myopia is all the more important as it starts young.
Early and intensive care is a priority in order to avoid pathologies related to high myopia.

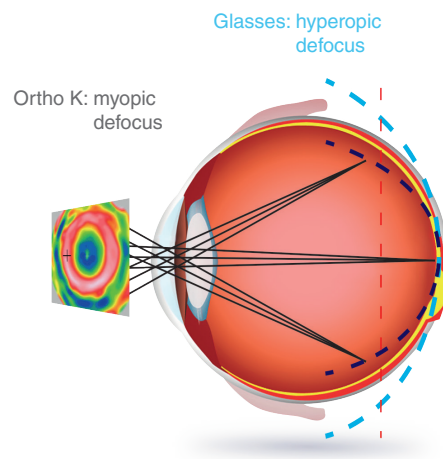
MYOPIA CONTROL: DRL LENSES ARE THE KEY

Innovative geometry for personalized treatment of myopia for children and young people

- **1st tear reservoir** (red ring on topographies)
 - Generates annular positive power
 - Moves peripheral retinal image shell forward
- **Customized back optic**
 - Places an addition zone closer to the center of the pupillary area
- **Double reservoir**
 - Improves centering
 - Enhances treatment efficiency



DRL lens showing the two tear reservoir



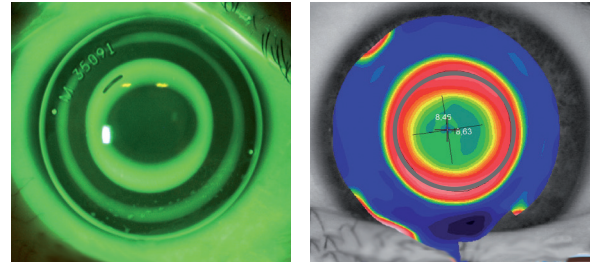
Peripheral retinal image according to the optical equipment

↓ TWO UNIQUE ORTHO K DESIGNS FOR CHILDREN

DRL MYOPIA CONTROL:

To slow down myopia progression in myopia between - 4.25 to -7.00 D

- 1st tear reservoir related to the correction
- Customized back optic zone
 - Addition ring inside the pupillary area
- Double tear reservoir



DRL Myopia Control -5.00

The addition generated in corneal mid-periphery with conventional ortho-k lenses is same amount than the myopia value.
 (ex: myopia = -1.00 D, Addition generated = + 1.00 D)
 This addition **does not allow optimal control** of myopia progression when myopia is ≤ -4.00 D.

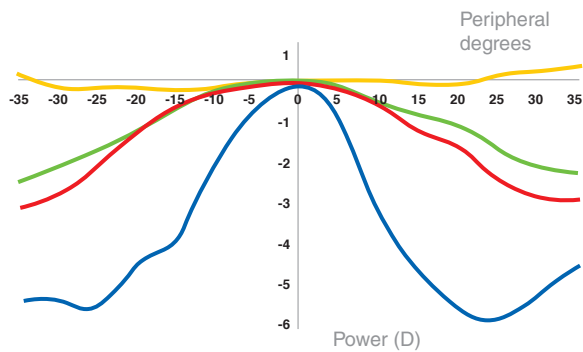
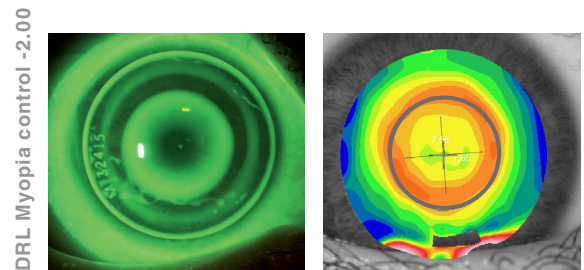
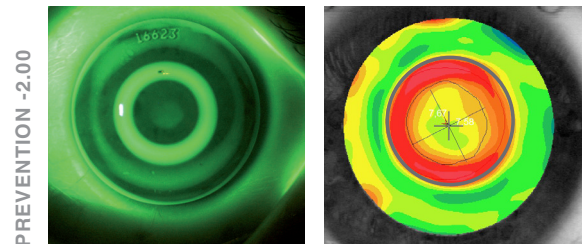
PREVENTION: the only lens that generates enough addition for myopia ≤ -4.00

DRL PREVENTION:

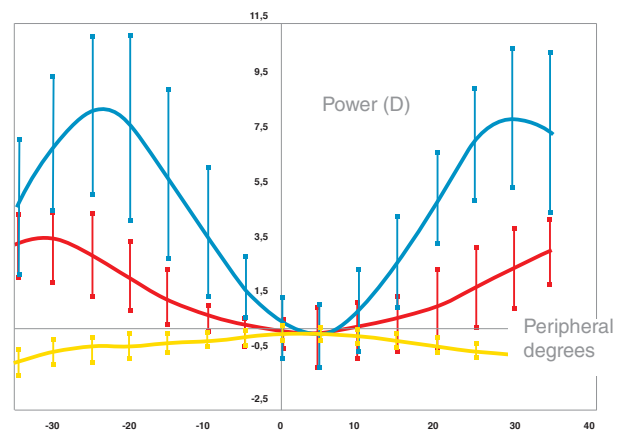
The revolutionary treatment of myopia ≤ -4.00 D for children

Myopia Active Care (MAC): unique system for treating low myopias

- 1st reservoir specific design for an increased clearance
 - Reinforces the slow down effect
 - Increases the amount of addition generated
- Optimized optic zone
 - Re-centers the addition zone in the pupillary area
 - Improves the peripheral defocus
- Double tear reservoir



— WITHOUT TREATMENT — DRLM — DRL CM — PREVENTION
 Relative peripheral and central refraction (Myopia 2.00)



— WITHOUT TREATMENT — DRL CM — PREVENTION
 Relative peripheral and central corneal power

DRL RANGE: MYOPIA PREVENTION AND CONTROL

	DRL PREVENTION ≤ -4.00 D	DRL Myopia Control from - 4.25 to -7.00 D
Indications	Risk of onset or risk of myopic progression	Myopic progression
Contraindications	<ul style="list-style-type: none"> • Lack of commitment on the part of the parents or child <ul style="list-style-type: none"> • Poor hygiene • Irregular sleep cycles • Ocular pathology, systemic disease • Internal astigmatism ≥ 0.75D • Astigmatism > 4.00D 	
Recommendations	<ul style="list-style-type: none"> • Give priority to outdoor activities (at least 2 hours / day) • Limit time spent on near-vision activities 	
Available materials	Optimum 100 (1st intention) and 125 – Boston XO and XO2 Handling tints: OD Violet / OG Blue	
Things you should know	<ul style="list-style-type: none"> • Limit wearing time when eyes are open <ul style="list-style-type: none"> • Renew annually • It is important to follow instructions concerning insertion, removal and lens care • 90% of the treatment is achieved in 4 days for the majority of young people with myopia <ul style="list-style-type: none"> • Possibility of halos at the beginning of treatment • Myopia higher than - 7.00D may need additional compensation with glasses 	

ORDERING LENSES:

- **Click & Fit software**
- technicalsupport@precilens.com
Essential data:
 - Subjective refraction
 - Export topographies
 - The HVID measured with ruler

**Emergency support in the case of
loss or breakage:**
Priority manufacturing
order@precilens.com
with the lens tracking number

Fitting guide and handling videos available at www.contactlensatnight.com

Technical Support:

Tél. +33 (0)1 45 13 18 49 - Fax +33 (0) 1 45 13 18 46 - E-mail : technicalsupport@precilens.com

