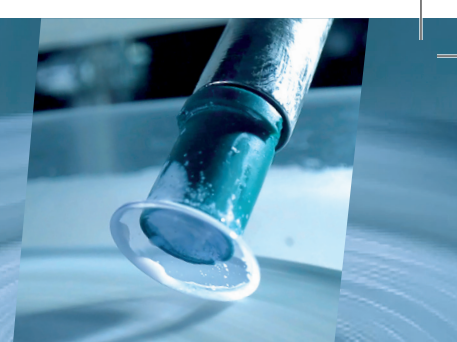


DAYTIME WEAR RIGID LENSES RANGE

First intention lenses for each visual need

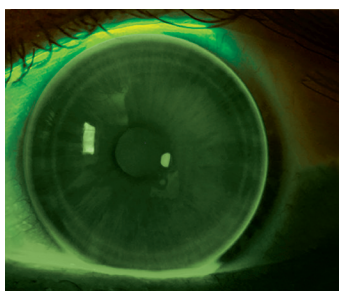


■ Unifocal: 2 innovative designs for superior wearing and viewing comfort

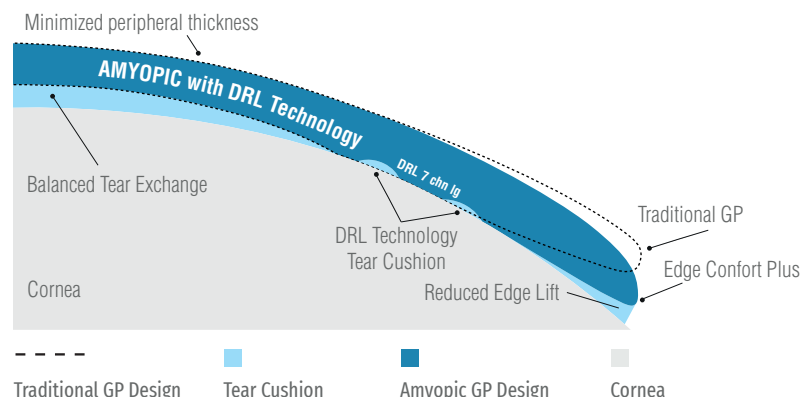
	Spheric equipment Corneal toricity < 30/100	Toric equipment Corneal toricity ≥ 30/100
MYOPIA MANAGMENT	PRE AMYOPIC ⁽¹⁾ Children/young people $\emptyset 10.20 r_0 = K - 0.05$	PRE AMYOPIC Toric ⁽¹⁾ Children/young people calculated by the laboratory ou $\emptyset 10.20 r_0 = K / r'_0 = K' + 0.15$
MYOPIA HYPERMETROPIA ASTIGMATISM	Corneal toricity < 40/100 PRE PERFORM ⁽¹⁾ $\emptyset 10.20 r_0 = K - 0.05$	Corneal toricity ≥ 40/100 PRE PERFORM TI ⁽¹⁾ calculated by the laboratory ou $\emptyset 10.20 r_0 = K / r'_0 = K' + 0.15$

(1) Adjustable eccentricities per steps of 0,10

PRE AMYOPIC/ PERFORM



- Optimal centering
- Increased ocular tolerance
- The guarantee of a successful fit



■ Multifocal: 2 high-performance designs for successful presbyopes fitting

















	Corneal toricity < 40/100	Corneal toricity ≥ 40/100
PRESBYOPIA Emmetropia Myopia Hypermetropia Astigmatism	MVB $\emptyset 9.60 r_0 = Km - 0.10$ EXPERT DS ⁽²⁾ $\emptyset 9.00 r_0 = Km$	MVB TI $\emptyset 9.60 r_0 = K - 0.30 / r'_0 = K' - 0.15$ EXPERT TI ⁽²⁾ calculated by Click&Fit or the laboratory or $\emptyset 9.00 r_0 = K - 0.05$ $r'_0 = K' + 0.10 + \text{kerato axis}$

■ Keratoconus: designs adapted to each stage of evolution

	Beginner	Advanced
KERATOCONUS	PR2 ⁽²⁾ $\emptyset 9.60 r_0 = K - 0.10$	PR2 K ⁽²⁾ Adjustable periphery depending on $\emptyset 8.50 r_0 = Km$

(2) Adjustable clearances per step of 0,05

▪ MATERIAL GUIDE

Technical specification	High DK				Medium DK		Low DK	
	Boston X02	Optimum 125	Optimum 100	Boston XO	Optimum 65	Boston E0	Optimum 26	Boston ES
								
Handling Tint RE/LE								
DK	141	125	100	100	65	58	26	18
n refractive index	1.424	1.432	1.431	1.415	1.437	1.429	1.45	1.443
Shore D hardness	78	77	75	81	79	83	83	85
Specific weigh	1.19	1.15	1.16	1.27	1.17	1.23	1.19	1.22

Indications	Advised material
Children	High Dk
High need for O2	High Dk
Post surgery	High Dk
Irregular cornea	Medium Dk
Corneal astigmatism	Medium Dk
Dry eye	Medium Low Dk
Poor quality tear film	Medium Low Dk
Continuous wear	High Dk
Night time wear	High Dk
Post PMMA	Low Dk

The choice of Precilens in 1 st intention	
Myopia management	Optimum 125/Boston X02
PRE range	Optimum 65
Keratoconus range	Optimum 65
Presbyopia	Optimum 26
Orthokeratology	Optimum 100



▪ LENS CARE

- For **AMYOPIC and PERFORM**, we recommend Peroxide solution for decontamination and Subtilisin deproteinization tablets for weekly deproteinization.
- For **other lenses**, we recommend rigid multi-purpose solution or a Peroxide solution, both combined with weekly deproteinization with Subtilisin deproteinization tablets.

Technical Support:

Phone: +33 (0)1 45 13 18 45 - E-mail : technique@precilens.com